

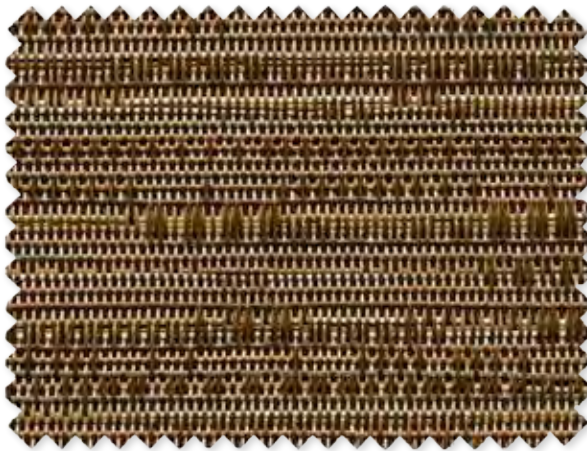
# Phifertex®

BY PHIFER

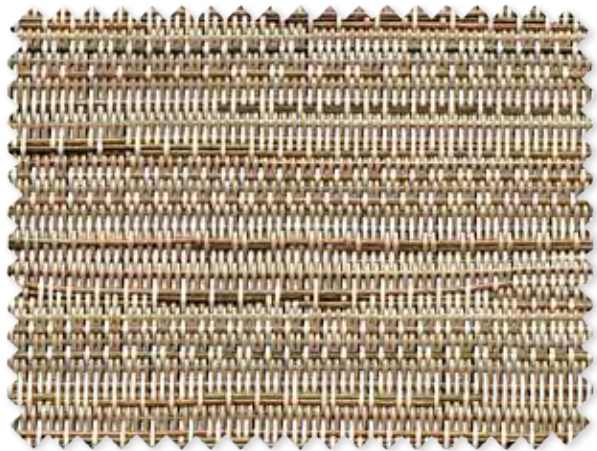
 Jacquards  
Slingable Fabrics







Fusion Chestnut | NW2  
3036881 | Construction: 42x16



Fusion Maple | NW1  
3036880 | Construction: 42x16



Grasscloth Natural | CN0  
3006993 | Construction: 30x14



Grasscloth Bronze | EH2  
3024087 | Construction: 30x14



Shantung White | 0EN  
3025683 | Construction: 42x20

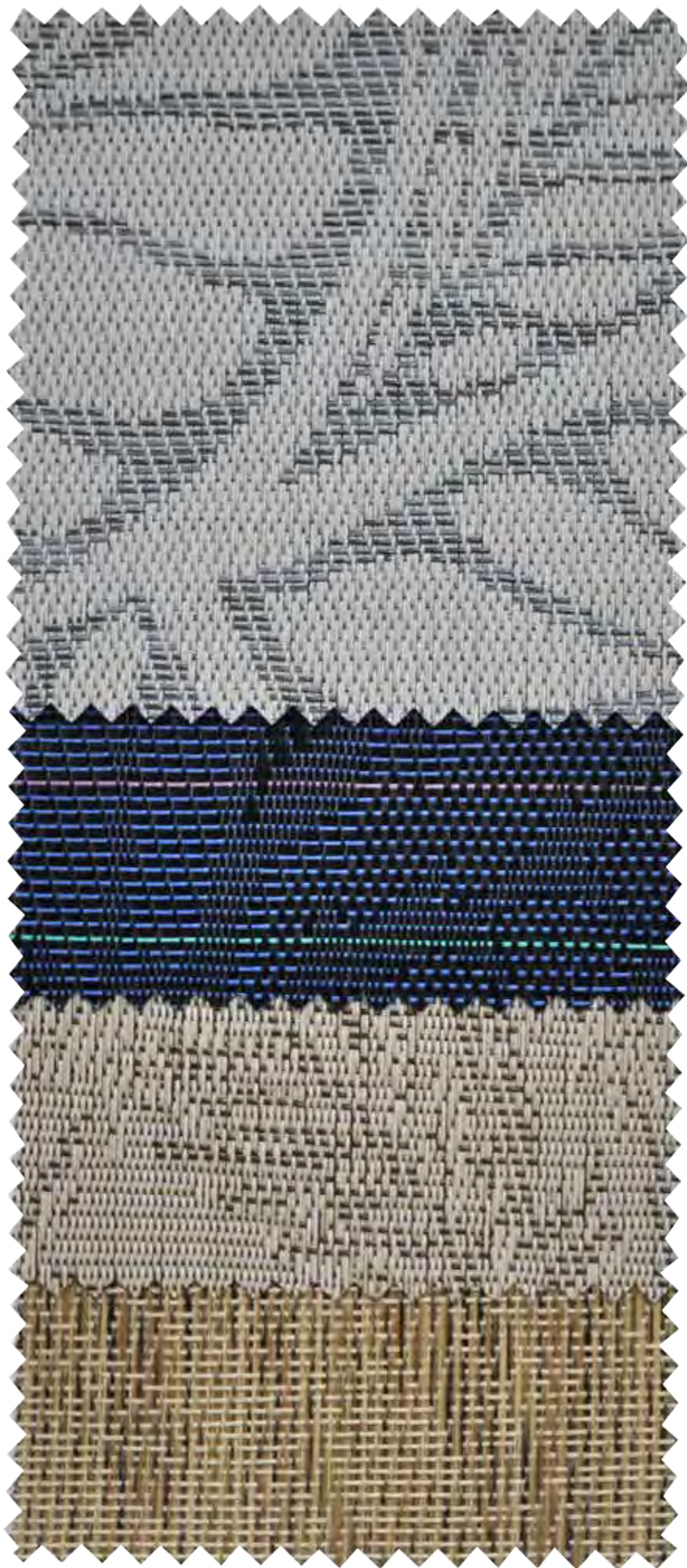


Lattice Greystone | NM9  
3034333 | Construction: 42x14





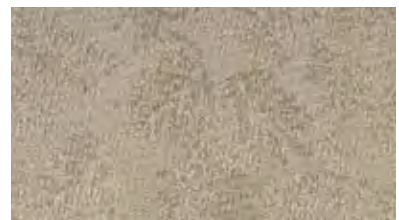




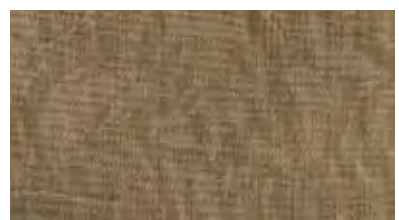
Cleo Harbor | LFT  
3036875 | Construction: 42x16



Wild Orchid Black | Z44  
3004443 | Construction: 42x14



Tropic Foliage | 0AG  
3004452 | Construction: 42x14



Island Palms Sadat | EM7  
3025674 | Construction: 42x14





Greek Key Lattice | YEA  
3032551 | Construction: 42x16



Valencia Blue | GP8  
3007018 | Construction: 30x14



Sumba Mocha | 969  
3004471 | Construction: 42x14



Caribbean Palm | 00U  
3009432 | Construction: 42x14

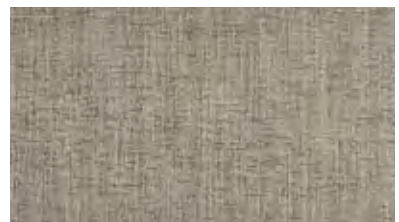




NEW | Shatter Blue | LIM  
3038982 | Construction: 42x14



NEW | Shatter Citron | DCN  
3038981 | Construction: 42x14



Pompass Grass Indigo | LDF  
3034323 | Construction: 42x14



Bungalow Island | LHU  
3038281 | Construction: 42x14

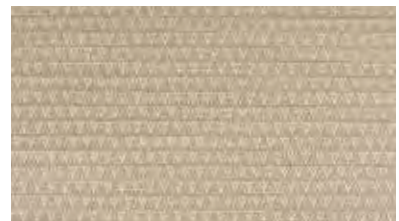




Echo Luster | NW3  
3036874 | Construction: 42x16



Echo Opal | DBX  
3036873 | Construction: 42x16



Dresden Stone | NN8  
3034321 | Construction: 42x16



Solido Mirage | LHS  
3038283 | Construction: 42x14



Solido Luxe | ZBB  
3038282 | Construction: 42x14



## FABRIC FEATURES

### DURABILITY/CLEANABILITY

Functional and durable, Phifertex fabrics offer excellent performance while withstanding spills, splatters and the hustle and bustle of high traffic areas. These fabrics are easy to maintain – easily cleaned with soap and water or 50/50 bleach to water solution.

### WARRANTY

Phifer offers a 3-year limited warranty for Phifertex Outdoor Fabrics. This warranty covers the fabric becoming non-functional due to loss of dimensional stability from exposure to conditions including sunlight, mildew, rot and normal atmospheric conditions. The warranty does not cover damage to the fabric from any source nor does it cover gradual fading or discoloration from atmospheric pollution or other debris. This warranty remains in effect for 3 years from the date of purchase. Phifer will provide new fabric, free of charge, to replace the non-functioning fabric. This warranty does not cover the cost of labor or other consequential or incidental expenses.



### GREENGUARD

GREENGUARD Certification ensures products have met some of the world's most rigorous and comprehensive standards for low emissions of volatile organic compounds (VOCs) into indoor air. Phifer was the first manufacturer in the outdoor fabric industry to achieve GREENGUARD certification. Certification is completely voluntary and ensures that the highest industry standards are being applied to maintain indoor air quality for the health and safety of building occupants.



### MICROBAN®

Phifertex fabrics are the only outdoor furniture fabrics in the world to include Microban protection. Microban antimicrobial protection works continuously to inhibit the growth of bacteria, mold and mildew that can cause stains, odors and product deterioration.



- Microban antimicrobial protection is infused into Phifertex fabrics for lasting protection that won't wash off or wear away for the lifetime of the product.
- Phifertex fabrics infused with Microban antimicrobial technology are ideal for any commercial or residential environment where microbes are a concern, including healthcare, hospitality, home, office, schools and institutions.

### FLAME RETARDANCE

- National Fire Protection Association, NFPA No. 101, "Life Safety Code", Class "A" rating. (Tested in accordance to ASTM E84, Surface Burning Characteristics of Building Material.) 17x11 (ASTM E84-16), 25x25 (ASTM E84-15b), 37x15 (ASTM E84-16), Plus (ASTM E84-15b)
- International Building Code (IBC), Section 803.1.1, Class "A" rating (Tested in accordance to ASTM E84).
- Upholstered Furniture Action Council Fabric Classification Test Method 1990 (UFAC) - Class "I" Rating.
- Federal Motor Vehicles Safety Standards, Section 571.302, Standard Number 302 (FMVSS 302), Flammability of Interior Materials.
- California Technical Bulletin 117-2013, Section 1, Cover Fabric Test.





# Phifertex®

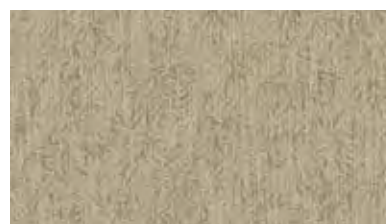
BY PHIFER



PVC / Olefin Blends  
Slingable Fabrics







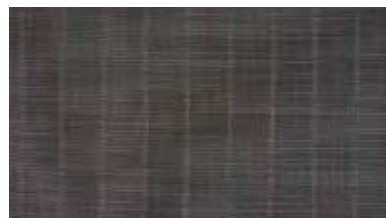
Natural Brush Forest Pebble | XHX  
3018446 | Construction: 42x24



Natural Brush Forest Abbey | BS8  
3018444 | Construction: 42x24

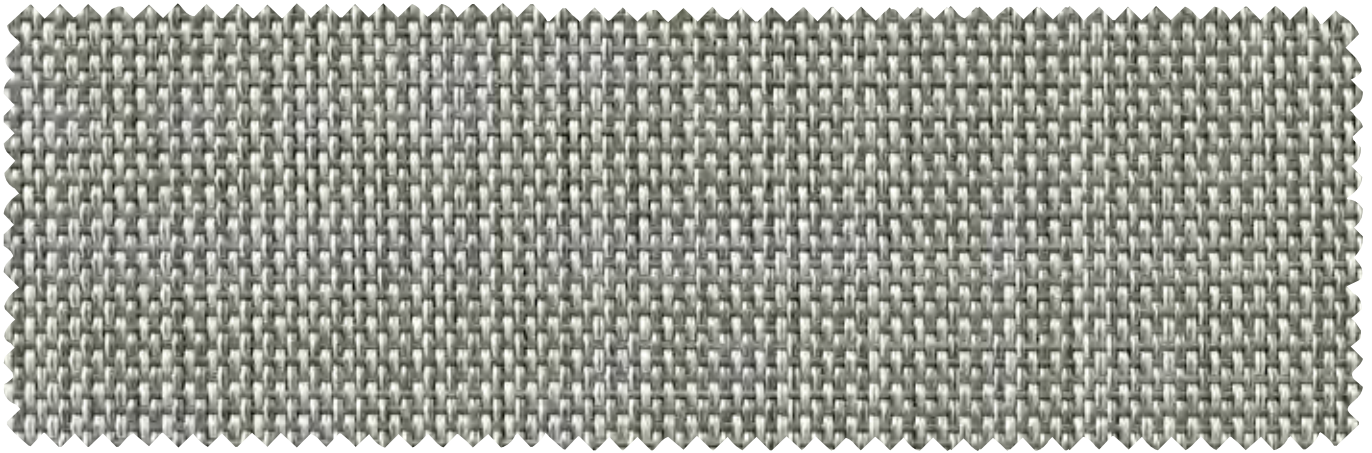


Raffia Natural | BJ3  
3016029 | Construction: 42x22

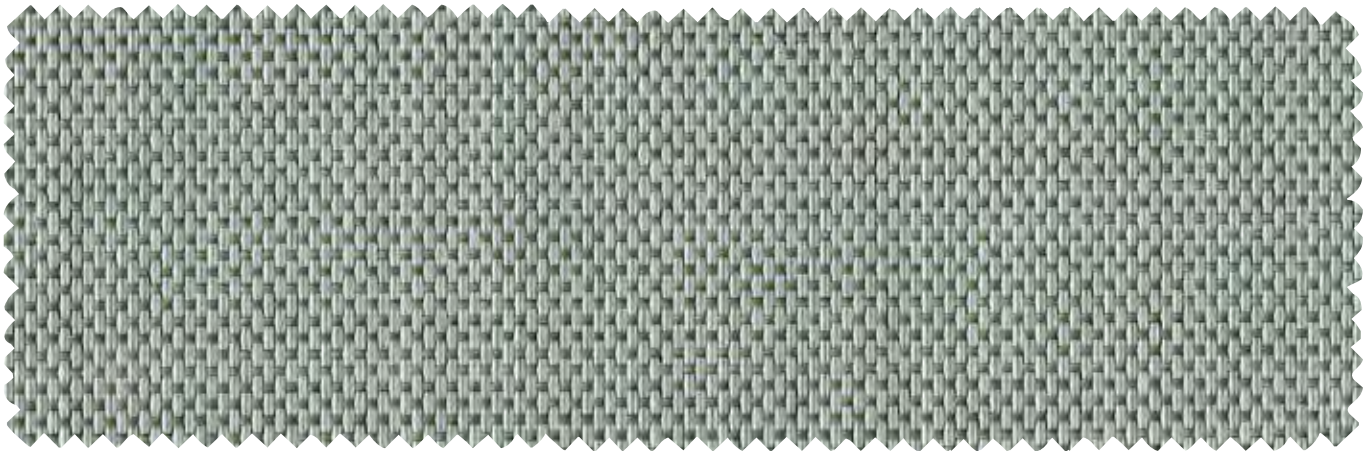


Raffia Stripe Sable | YHL  
3036889 | Construction: 42x24

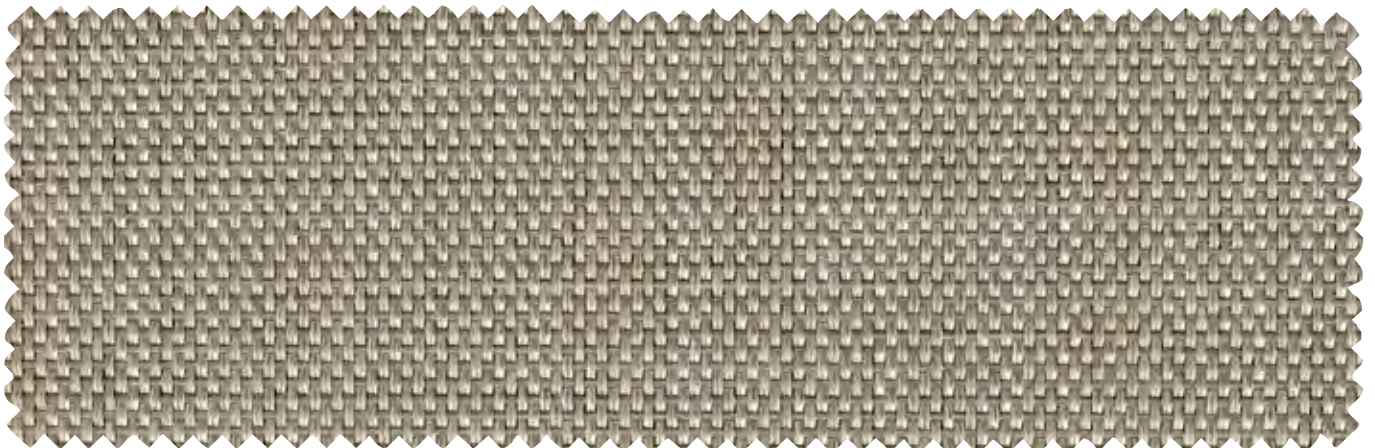




NEW | Prestige Fog Grey | ZBW  
3039294 | Construction: 42x16



NEW | Prestige Mist | LIU  
3039295 | Construction: 42x16



NEW | Prestige Stucco | NBC  
3039296 | Construction: 42x16





China Brush | BR9  
3018442 | Construction: 42x24



Crystal Linen Ash | NC4  
3030828 | Construction: 42x24



Laird Willow | DZ7  
3032485 | Construction: 42x24



Crystal Linen Java | NC3  
3030827 | Construction: 42x14



Catania Latte | NW4  
3036883 | Construction: 42x24

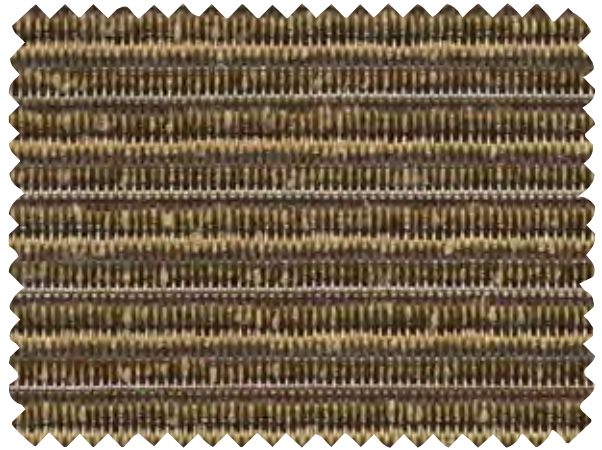


Weston Charcoal | XXS  
3027636 Construction: 42x24





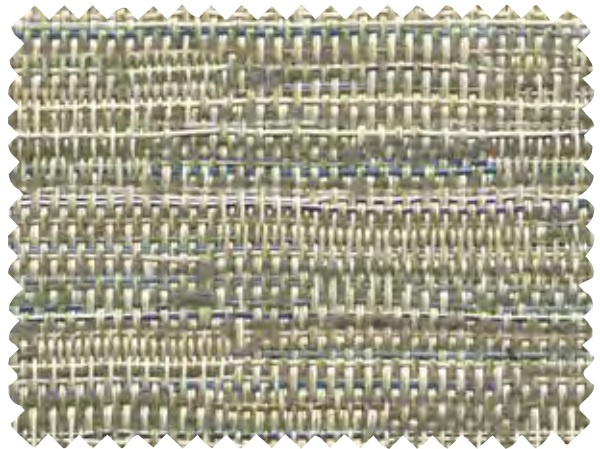
Mingle Pecan | EY3  
3029019 | Construction: 42x24 with boucle



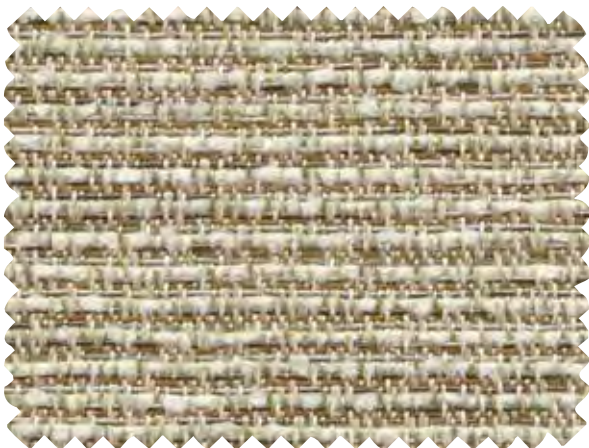
Hayden Hickory | NB6  
3030830 | Construction: 42x24 with 2600



Dornick Cedar | KY2  
3034325 | Construction: 42x24 with 2600



Vegas Blues | LEE  
3035589 | Construction: 42x20 with 2600



Kipton Pebble | NW5  
3036884 | Construction: 42x24 with 2600



Kipton Suede | NH1  
3032484 | Construction: 42x24 with 2600



## FABRIC FEATURES

### DURABILITY/CLEANABILITY

Functional and durable, Phifertex fabrics offer excellent performance while withstanding spills, splatters and the hustle and bustle of high traffic areas. These fabrics are easy to maintain – easily cleaned with soap and water or 50/50 bleach to water solution.

### WARRANTY

Phifer offers a 3-year limited warranty for Phifertex Outdoor Fabrics. This warranty covers the fabric becoming non-functional due to loss of dimensional stability from exposure to conditions including sunlight, mildew, rot and normal atmospheric conditions. The warranty does not cover damage to the fabric from any source nor does it cover gradual fading or discoloration from atmospheric pollution or other debris. This warranty remains in effect for 3 years from the date of purchase. Phifer will provide new fabric, free of charge, to replace the non-functioning fabric. This warranty does not cover the cost of labor or other consequential or incidental expenses.



### GREENGUARD

GREENGUARD Certification ensures products have met some of the world's most rigorous and comprehensive standards for low emissions of volatile organic compounds (VOCs) into indoor air. Phifer was the first manufacturer in the outdoor fabric industry to achieve GREENGUARD certification. Certification is completely voluntary and ensures that the highest industry standards are being applied to maintain indoor air quality for the health and safety of building occupants.



### MICROBAN®

Phifertex fabrics are the only outdoor furniture fabrics in the world to include Microban protection. Microban antimicrobial protection works continuously to inhibit the growth of bacteria, mold and mildew that can cause stains, odors and product deterioration.



- Microban antimicrobial protection is infused into Phifertex fabrics for lasting protection that won't wash off or wear away for the lifetime of the product.
- Phifertex fabrics infused with Microban antimicrobial technology are ideal for any commercial or residential environment where microbes are a concern, including healthcare, hospitality, home, office, schools and institutions.

### FLAME RETARDANCE

- National Fire Protection Association, NFPA No. 101, "Life Safety Code", Class "A" rating. (Tested in accordance to ASTM E84, Surface Burning Characteristics of Building Material.) 17x11 (ASTM E84-16), 25x25 (ASTM E84-15b), 37x15 (ASTM E84-16), Plus (ASTM E84-15b)
- International Building Code (IBC), Section 803.1.1, Class "A" rating (Tested in accordance to ASTM E84).
- Upholstered Furniture Action Council Fabric Classification Test Method 1990 (UFAC) - Class "I" Rating.
- Federal Motor Vehicles Safety Standards, Section 571.302, Standard Number 302 (FMVSS 302), Flammability of Interior Materials.
- California Technical Bulletin 117-2013, Section 1, Cover Fabric Test.





# Phifertex®

BY PHIFER

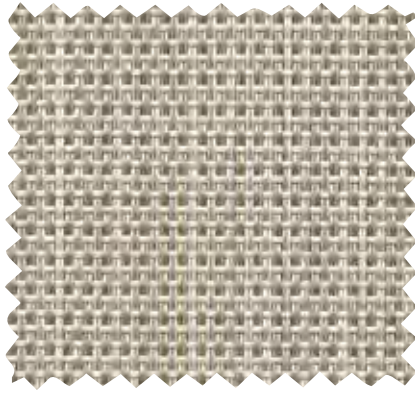
 Phifertex Plus  
Slingable Fabrics







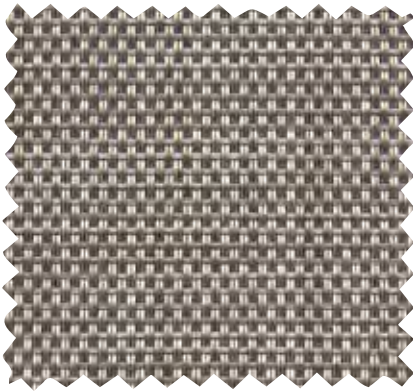
Spring Tweed Copper | NW6  
3036891 | Construction: 42x14



Spring Tweed Silver | YHM  
3036893 | Construction: 42x14



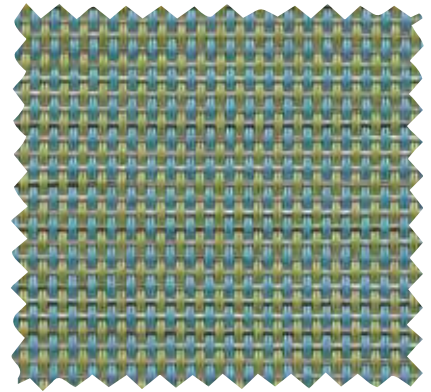
Burlap | BH4  
3016019 | Construction: 42x14



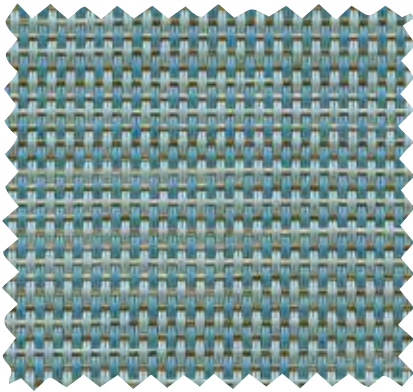
Mica Pearl | ZAY  
3038274 | Construction: 42x14



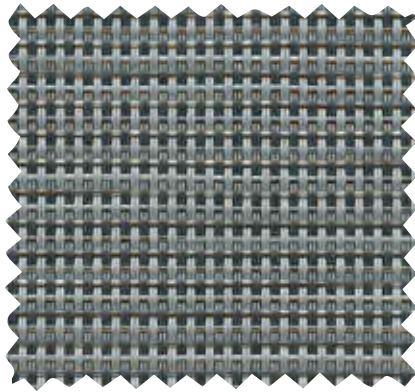
Copperlite | NAK  
3038273 | Construction: 42x14



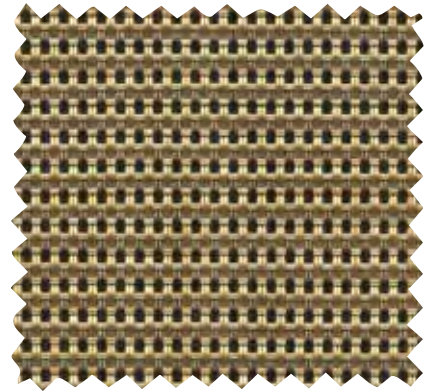
Straw Mat Blue | LBY  
3032480 | Construction: 42x14



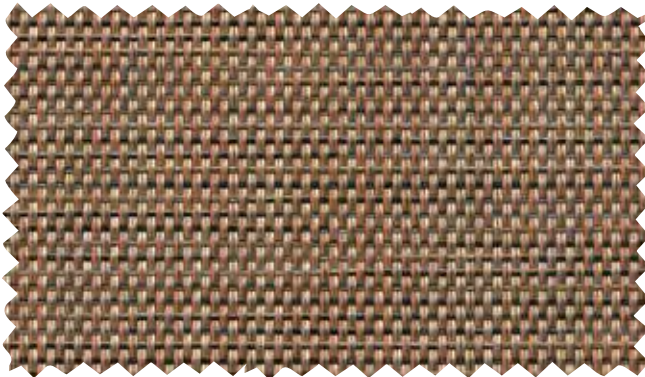
Madras Tweed Surf | LFW  
3036892 | Construction: 42x14



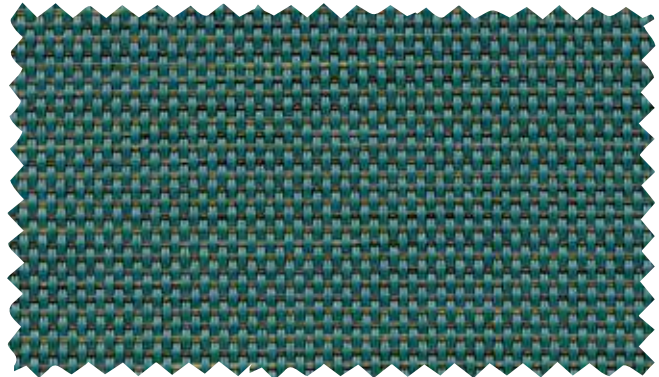
Madras Tweed Harbor | LFV  
3036890 | Construction: 42x14



Straw Mat Cognac | C03  
3007506 | Construction: 42x14



Madras Tweed Terracotta | KBO  
3038272 | Construction: 42x14

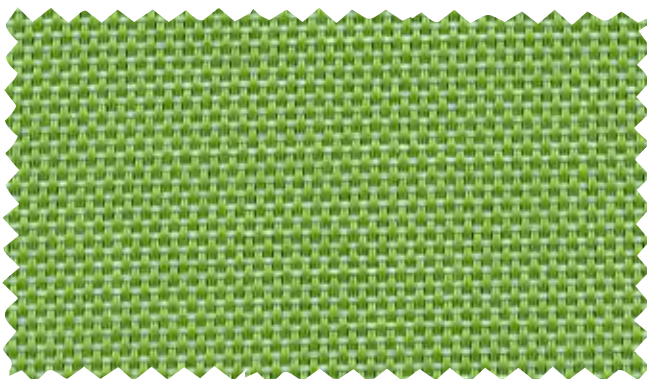


NEW | Madras Tweed Teal | DCX  
3039293 | Construction: 42x14

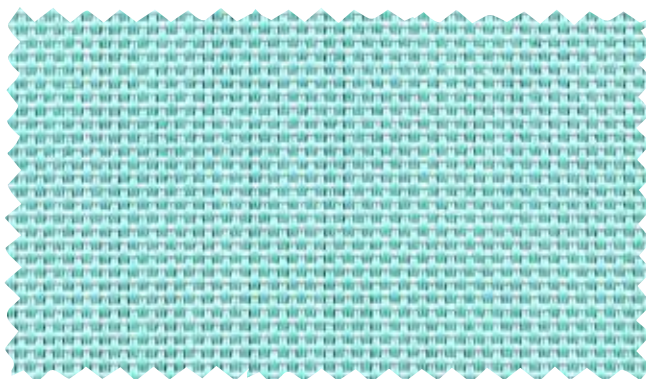




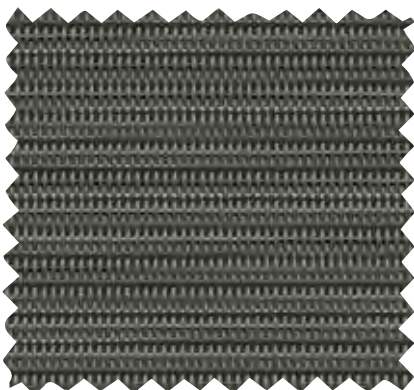




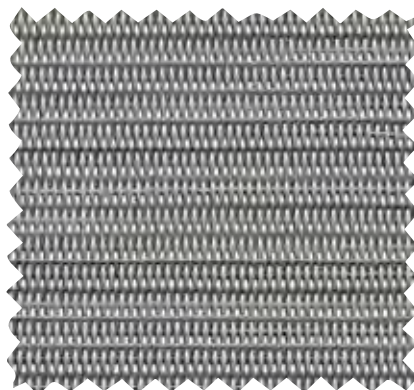
NEW | Citron | DCQ  
3039244 | Construction: 42x14



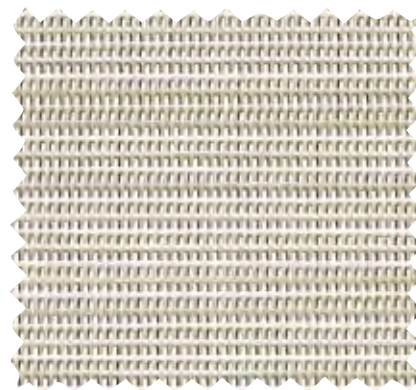
NEW | Breeze | LIR  
3039246 | Construction: 42x14



Metallica Smoke | XXG  
3027626 | Construction: 42x14



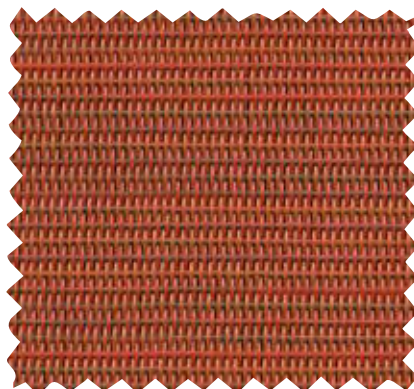
Metallica Platinum | XUP  
3025678 | Construction: 42x14



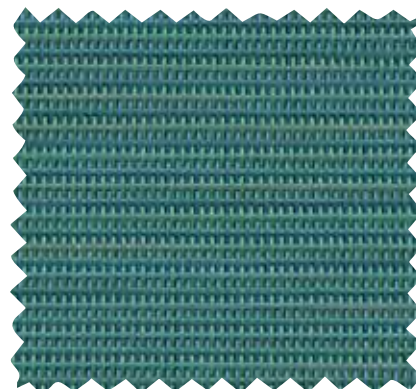
Metallica White | OHK  
3032475 | Construction: 42x14



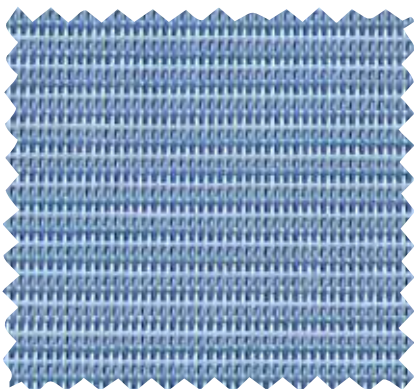
Dupioni Sapphire | L96  
3029023 | Construction: 42x14



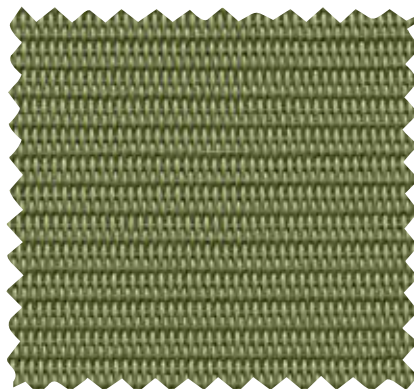
Metallica Salsa | KK3  
3018436 | Construction: 42x14



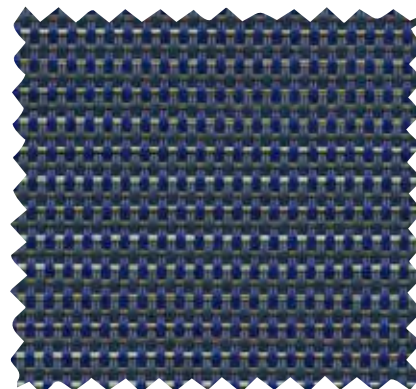
Metallica Lagoon | LGD  
3036949 | Construction: 42x14



Dupioni Poolside | L37  
3021367 | Construction: 42x14

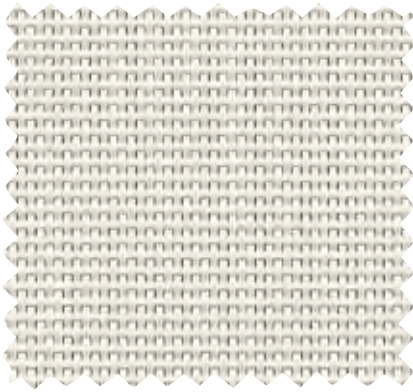


Dupioni Kiwi | DJ7  
3021366 | Construction: 42x14

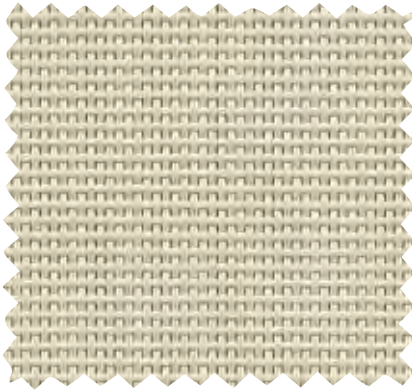


Tweed Indigo | LDC  
3034309 | Construction: 42x14

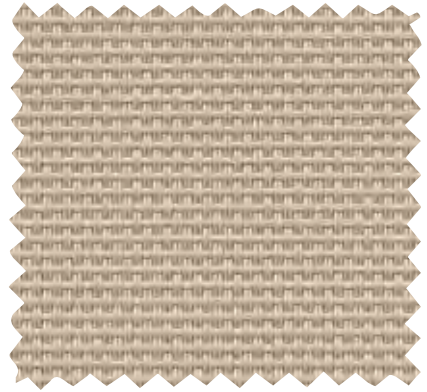




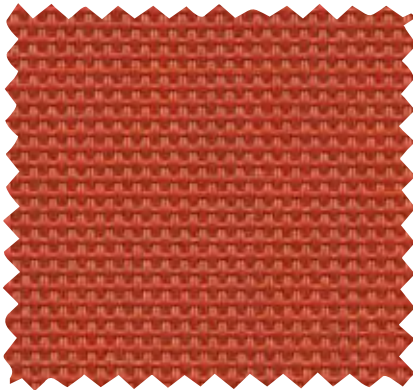
White | 000  
3007143 | Construction: 42x14



Grey Sand | X00  
3007163 | Construction: 42x14



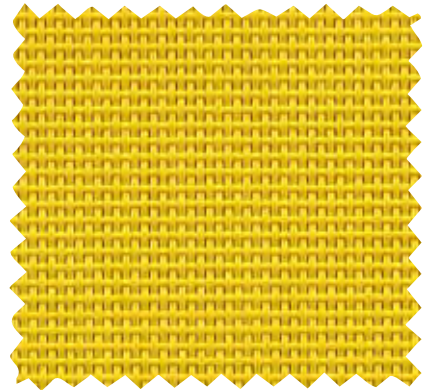
Stucco | 0Y3  
3007145 | Construction: 42x14



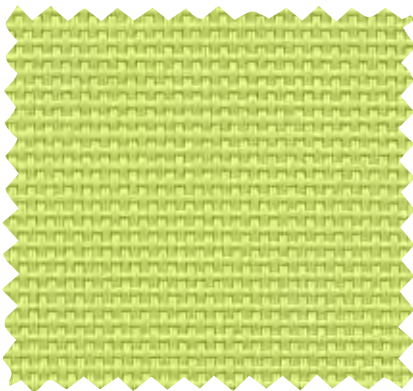
Salsa | KG4  
3013967 | Construction: 42x14



Snappy | KF4  
3013965 | Construction: 42x14



Lemon Yellow | 406  
3007147 | Construction: 42x14



Garden Green | DB6  
3013966 | Construction: 42x14



Holly Green | CL1  
3007154 | Construction: 42x14



Royal Blue | G00  
3007156 | Construction: 42x14



Navy Pier | GP5  
3007159 | Construction: 42x14



Black | X04  
3007165 | Construction: 42x14



## FABRIC FEATURES

### DURABILITY/CLEANABILITY

Functional and durable, Phifertex fabrics offer excellent performance while withstanding spills, splatters and the hustle and bustle of high traffic areas. These fabrics are easy to maintain – easily cleaned with soap and water or 50/50 bleach to water solution.

### WARRANTY

Phifer offers a 3-year limited warranty for Phifertex Outdoor Fabrics. This warranty covers the fabric becoming non-functional due to loss of dimensional stability from exposure to conditions including sunlight, mildew, rot and normal atmospheric conditions. The warranty does not cover damage to the fabric from any source nor does it cover gradual fading or discoloration from atmospheric pollution or other debris. This warranty remains in effect for 3 years from the date of purchase. Phifer will provide new fabric, free of charge, to replace the non-functioning fabric. This warranty does not cover the cost of labor or other consequential or incidental expenses.



### GREENGUARD

GREENGUARD Certification ensures products have met some of the world's most rigorous and comprehensive standards for low emissions of volatile organic compounds (VOCs) into indoor air. Phifer was the first manufacturer in the outdoor fabric industry to achieve GREENGUARD certification. Certification is completely voluntary and ensures that the highest industry standards are being applied to maintain indoor air quality for the health and safety of building occupants.



### MICROBAN®

Phifertex fabrics are the only outdoor furniture fabrics in the world to include Microban protection. Microban antimicrobial protection works continuously to inhibit the growth of bacteria, mold and mildew that can cause stains, odors and product deterioration.



- Microban antimicrobial protection is infused into Phifertex fabrics for lasting protection that won't wash off or wear away for the lifetime of the product.
- Phifertex fabrics infused with Microban antimicrobial technology are ideal for any commercial or residential environment where microbes are a concern, including healthcare, hospitality, home, office, schools and institutions.

### FLAME RETARDANCE

- National Fire Protection Association, NFPA No. 101, "Life Safety Code", Class "A" rating. (Tested in accordance to ASTM E84, Surface Burning Characteristics of Building Material.) 17x11 (ASTM E84-16), 25x25 (ASTM E84-15b), 37x15 (ASTM E84-16), Plus (ASTM E84-15b)
- International Building Code (IBC), Section 803.1.1, Class "A" rating (Tested in accordance to ASTM E84).
- Upholstered Furniture Action Council Fabric Classification Test Method 1990 (UFAC) - Class "I" Rating.
- Federal Motor Vehicles Safety Standards, Section 571.302, Standard Number 302 (FMVSS 302), Flammability of Interior Materials.
- California Technical Bulletin 117-2013, Section 1, Cover Fabric Test.





# Phifertex®

BY PHIFER

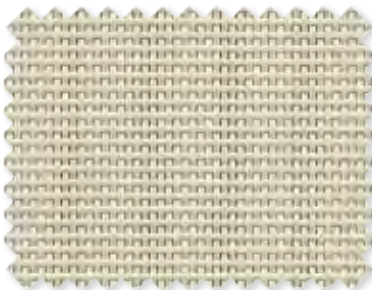
 Resort Collection  
Slingable Fabrics



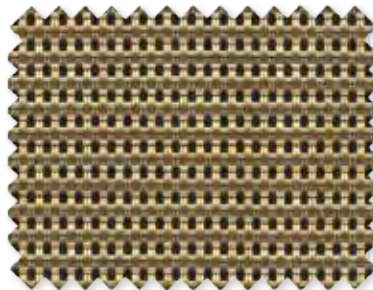




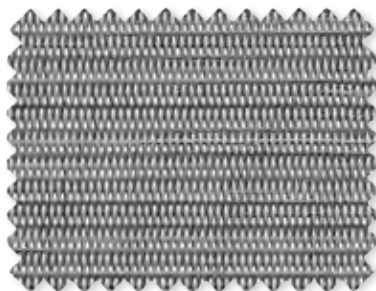
White | 000  
3007143 | Construction: 42x14



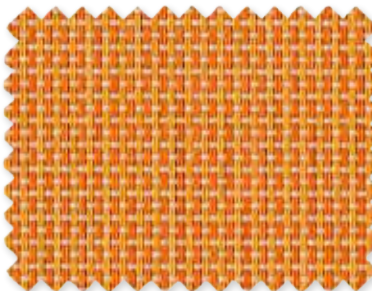
Grey Sand | X00  
3007163 | Construction: 42x14



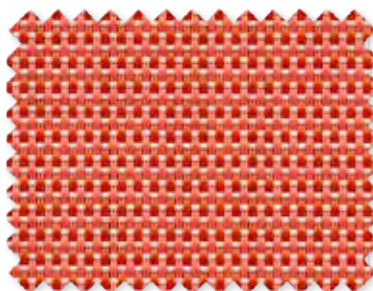
Straw Mat Cognac | C03  
3007506 | Construction: 42x14



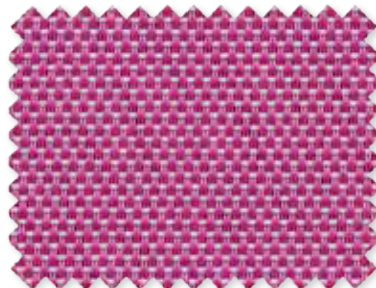
Metallica Platinum | XUP  
3025678 | Construction: 42x14



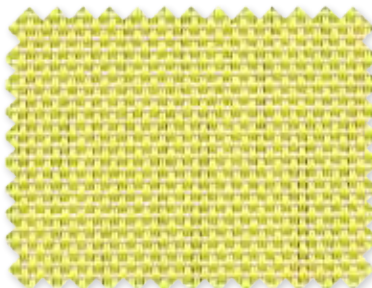
Straw Mat Melon | KBZ  
3039241 | Construction: 42x14



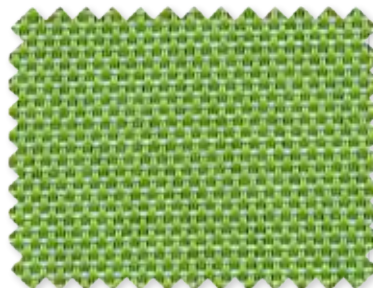
Straw Mat Coral | KBQ  
3038514 | Construction: 42x14



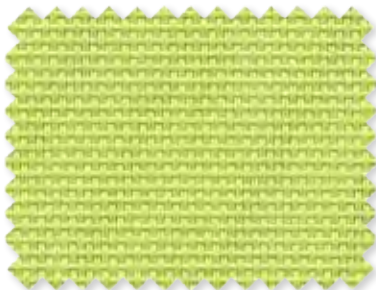
Orchid | KCA  
3039243 | Construction: 42x14



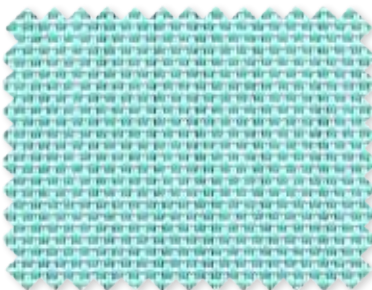
Daffodil | 720  
3039242 | Construction: 42x14



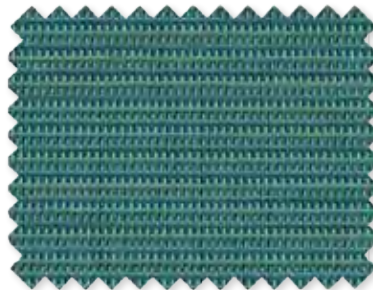
Citron | DCQ  
3039244 | Construction: 42x14



Garden Green | DB6  
3013966 | Construction: 42x14



Breeze | LIR  
3039246 | Construction: 42x14



Metallica Lagoon | LGD  
3036949 | Construction: 42x14



Pacific | LIQ  
3039245 | Construction: 42x14

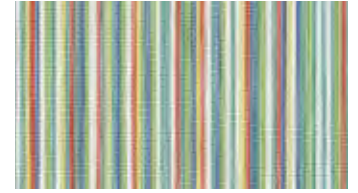
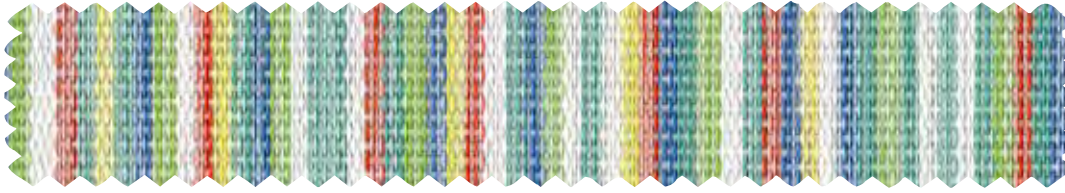


Royal Blue | G00  
3007156 | Construction: 42x14

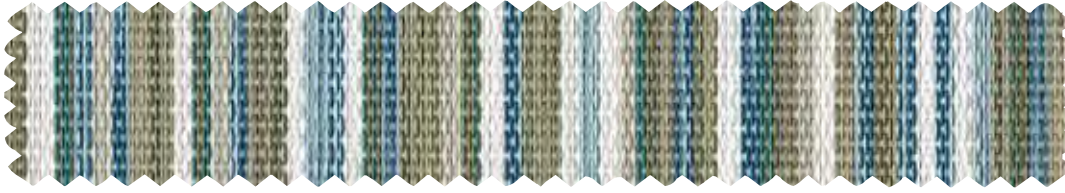


Dupioni Sapphire | L96  
3029023 | Construction: 42x14





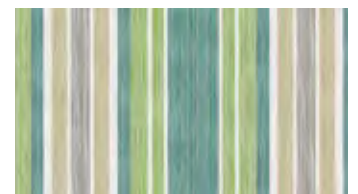
Coco Confetti | DCR | 3039250 | Construction: 42x14



Coco Hightide | LIT | 3039251 | Construction: 42x14



Maui Royal | LIS | 3039255 | Construction: 42x14



Tempo Spearmint | DCS | 3039252 | Construction: 42x14



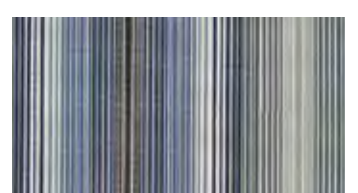
Kona Sunset | KCB | 3039254 | Construction: 42x14



Kona Playa | DCT | 3039253 | Construction: 42x14



Daytripper Horizon | KCE | 3039290 | Construction: 42x14



Daytripper Denim | LIZ | 3039291 | Construction: 42x14



## FABRIC FEATURES

### DURABILITY/CLEANABILITY

Functional and durable, Phifertex fabrics offer excellent performance while withstanding spills, splatters and the hustle and bustle of high traffic areas. These fabrics are easy to maintain – easily cleaned with soap and water or 50/50 bleach to water solution.

### WARRANTY

Phifer offers a 3-year limited warranty for Phifertex Outdoor Fabrics. This warranty covers the fabric becoming non-functional due to loss of dimensional stability from exposure to conditions including sunlight, mildew, rot and normal atmospheric conditions. The warranty does not cover damage to the fabric from any source nor does it cover gradual fading or discoloration from atmospheric pollution or other debris. This warranty remains in effect for 3 years from the date of purchase. Phifer will provide new fabric, free of charge, to replace the non-functioning fabric. This warranty does not cover the cost of labor or other consequential or incidental expenses.



### GREENGUARD

GREENGUARD Certification ensures products have met some of the world's most rigorous and comprehensive standards for low emissions of volatile organic compounds (VOCs) into indoor air. Phifer was the first manufacturer in the outdoor fabric industry to achieve GREENGUARD certification. Certification is completely voluntary and ensures that the highest industry standards are being applied to maintain indoor air quality for the health and safety of building occupants.



### MICROBAN®

Phifertex fabrics are the only outdoor furniture fabrics in the world to include Microban protection. Microban antimicrobial protection works continuously to inhibit the growth of bacteria, mold and mildew that can cause stains, odors and product deterioration.



- Microban antimicrobial protection is infused into Phifertex fabrics for lasting protection that won't wash off or wear away for the lifetime of the product.
- Phifertex fabrics infused with Microban antimicrobial technology are ideal for any commercial or residential environment where microbes are a concern, including healthcare, hospitality, home, office, schools and institutions.

### FLAME RETARDANCE

- National Fire Protection Association, NFPA No. 101, "Life Safety Code", Class "A" rating. (Tested in accordance to ASTM E84, Surface Burning Characteristics of Building Material.) 17x11 (ASTM E84-16), 25x25 (ASTM E84-15b), 37x15 (ASTM E84-16), Plus (ASTM E84-15b)
- International Building Code (IBC), Section 803.1.1, Class "A" rating (Tested in accordance to ASTM E84).
- Upholstered Furniture Action Council Fabric Classification Test Method 1990 (UFAC) - Class "I" Rating.
- Federal Motor Vehicles Safety Standards, Section 571.302, Standard Number 302 (FMVSS 302), Flammability of Interior Materials.
- California Technical Bulletin 117-2013, Section 1, Cover Fabric Test.



**PHIFER**  
INCORPORATED

phifer.com



Phifertex is a registered trademark of PHIFER INCORPORATED  
™ UL, the UL logos and the UL mark are trademarks of UL LLC.  
MICROBAN is a registered trademark of Microban Products Company.

Phifertex Card Set 3030135  
Resort Collection 3039602 V19



## STANDARD MESH



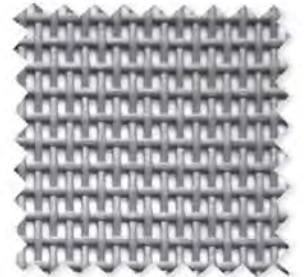
White | 000  
3006847 | Construction: 17x11



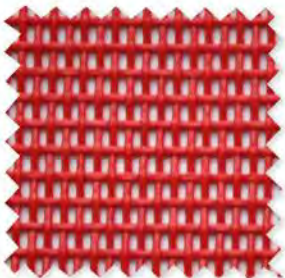
Grey Sand | X00  
3006891 | Construction: 17x11



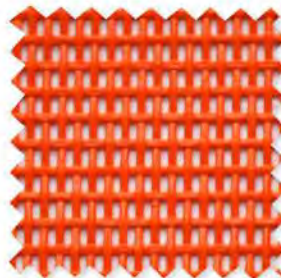
Almond | 186  
3006851 | Construction: 17x11



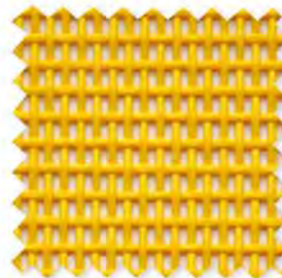
Grey | X11  
3006898 | Construction: 17x11



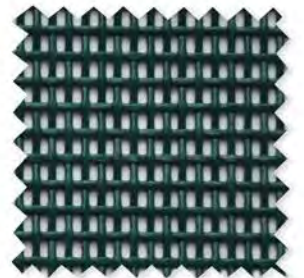
Christmas Red | M96  
3006888 | Construction: 17x11



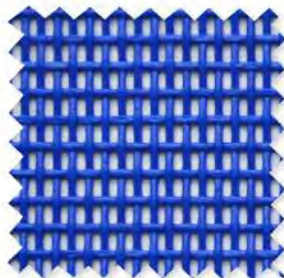
Orange | 412  
3006857 | Construction: 17x11



Lemon Yellow | 406  
3006855 | Construction: 17x11



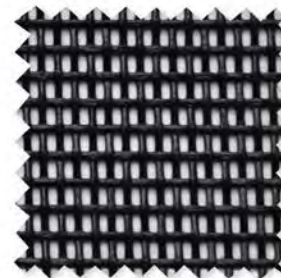
Spruce Green | C09  
3006865 | Construction: 17x11



Royal Blue | G00  
3000050 | Construction: 17x11

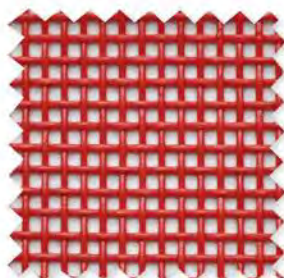


Navy | G01  
3006878 | Construction: 17x11

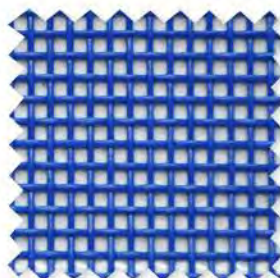


Black | X04  
3006894 | Construction: 17x11

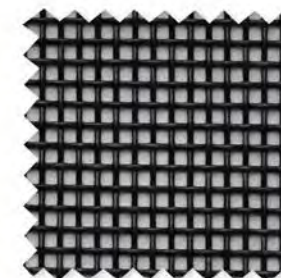
## RECREATIONAL MESH



Christmas Red | M96  
3006623 | Construction: 13x12



Royal Blue | G00  
3006615 | Construction: 13x12



Black | X04  
3008933 | Construction: 13x12



## FABRIC FEATURES

### DURABILITY/CLEANABILITY

Functional and durable, Phifertex fabrics offer excellent performance while withstanding spills, splatters and the hustle and bustle of high traffic areas. These fabrics are easy to maintain – easily cleaned with soap and water or 50/50 bleach to water solution.

### WARRANTY

Phifer offers a 3-year limited warranty for Phifertex Outdoor Fabrics. This warranty covers the fabric becoming non-functional due to loss of dimensional stability from exposure to conditions including sunlight, mildew, rot and normal atmospheric conditions. The warranty does not cover damage to the fabric from any source nor does it cover gradual fading or discoloration from atmospheric pollution or other debris. This warranty remains in effect for 3 years from the date of purchase. Phifer will provide new fabric, free of charge, to replace the non-functioning fabric. This warranty does not cover the cost of labor or other consequential or incidental expenses.



### GREENGUARD

GREENGUARD Certification ensures products have met some of the world's most rigorous and comprehensive standards for low emissions of volatile organic compounds (VOCs) into indoor air. Phifer was the first manufacturer in the outdoor fabric industry to achieve GREENGUARD certification. Certification is completely voluntary and ensures that the highest industry standards are being applied to maintain indoor air quality for the health and safety of building occupants.



### MICROBAN®

Phifertex fabrics are the only outdoor furniture fabrics in the world to include Microban protection. Microban antimicrobial protection works continuously to inhibit the growth of bacteria, mold and mildew that can cause stains, odors and product deterioration.



- Microban antimicrobial protection is infused into Phifertex fabrics for lasting protection that won't wash off or wear away for the lifetime of the product.
- Phifertex fabrics infused with Microban antimicrobial technology are ideal for any commercial or residential environment where microbes are a concern, including healthcare, hospitality, home, office, schools and institutions.

### FLAME RETARDANCE

- National Fire Protection Association, NFPA No. 101, "Life Safety Code", Class "A" rating. (Tested in accordance to ASTM E84, Surface Burning Characteristics of Building Material.) 17x11 (ASTM E84-16), 25x25 (ASTM E84-15b), 37x15 (ASTM E84-16), Plus (ASTM E84-15b)
- International Building Code (IBC), Section 803.1.1, Class "A" rating (Tested in accordance to ASTM E84).
- Upholstered Furniture Action Council Fabric Classification Test Method 1990 (UFAC) - Class "I" Rating.
- Federal Motor Vehicles Safety Standards, Section 571.302, Standard Number 302 (FMVSS 302), Flammability of Interior Materials.
- California Technical Bulletin 117-2013, Section 1, Cover Fabric Test.





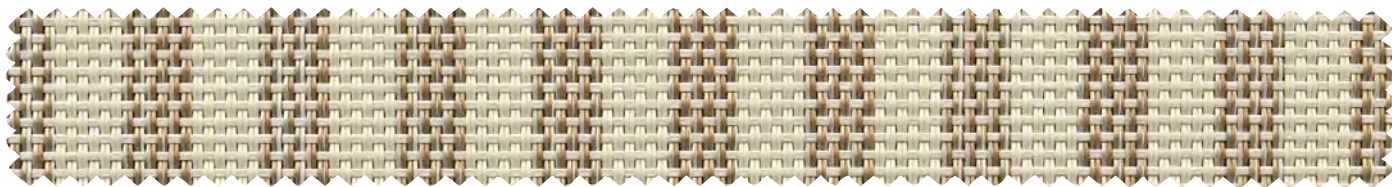
# Phifertex®

BY PHIFER

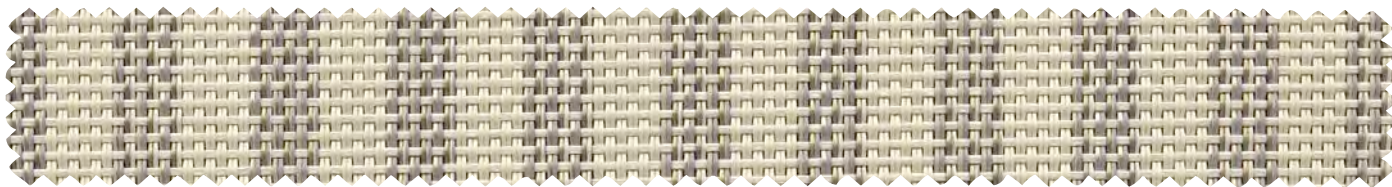
 Phifertex Stripes  
Slingable Fabrics



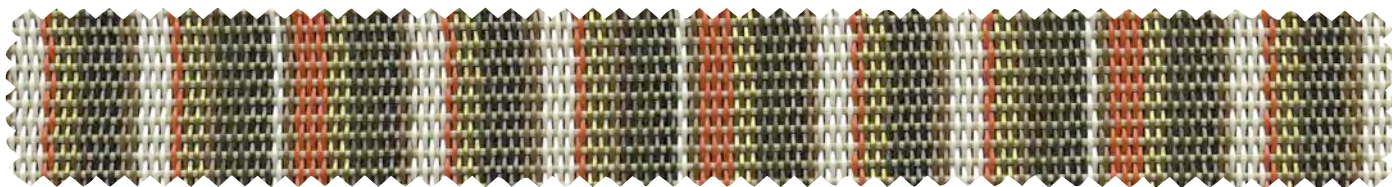




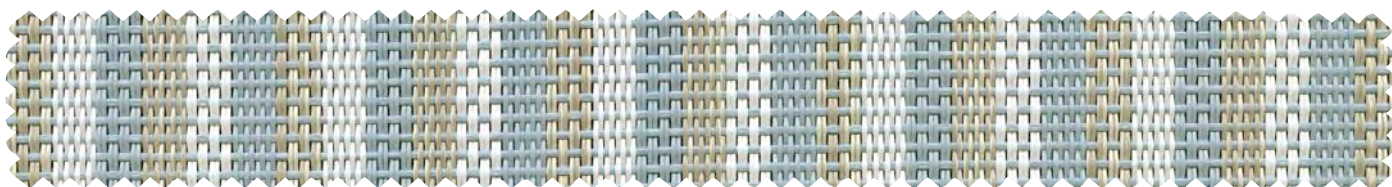
Vineyard Stripe Copper | NW7 | 3036896 | Construction: 42x14



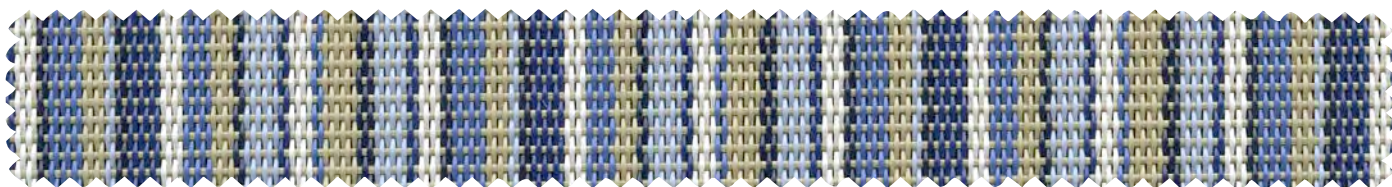
Vineyard Stripe Silver | YHN | 3036897 | Construction: 42x14



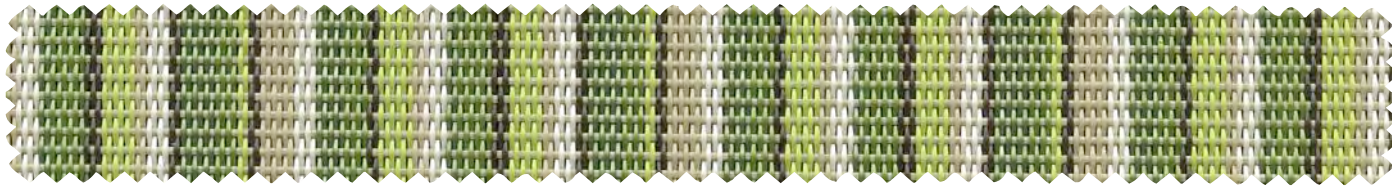
Delray Stripe Conch | DJ5 | 3021372 | Construction: 42x14



Aquafino | GY0 | 3009436 | Construction: 42x14



Delray Stripe Poolside | L38 | 3021370 | Construction: 42x14



Delray Stripe Kiwi | DJ6 | 3021371 | Construction: 42x14



NEW | Coco High Tide | LIT | 3039251 | Construction: 42x14

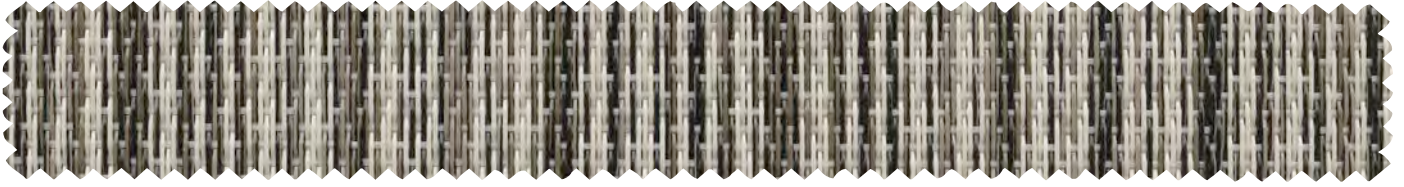




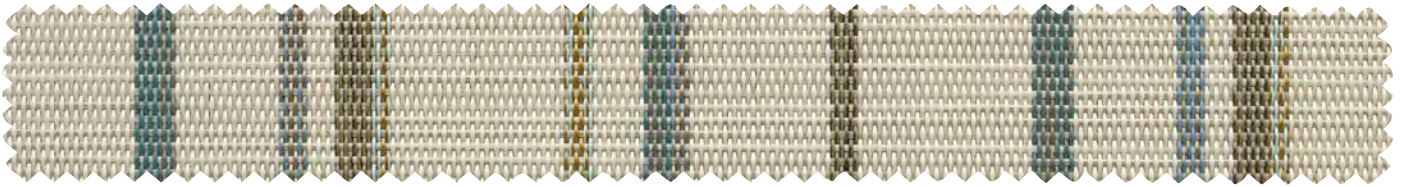




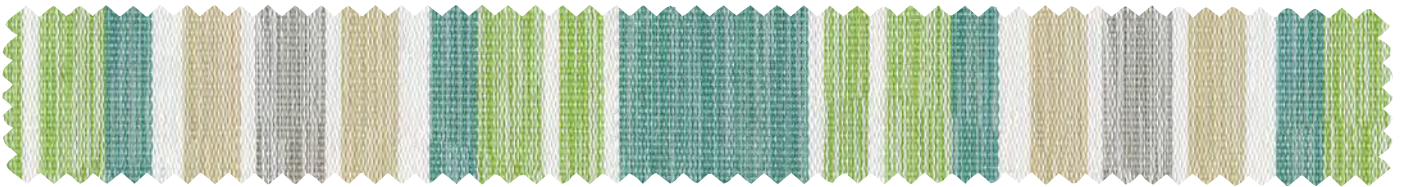
Trixie Stripe Myrtle | LDB | 3034328 | Construction: 42x14



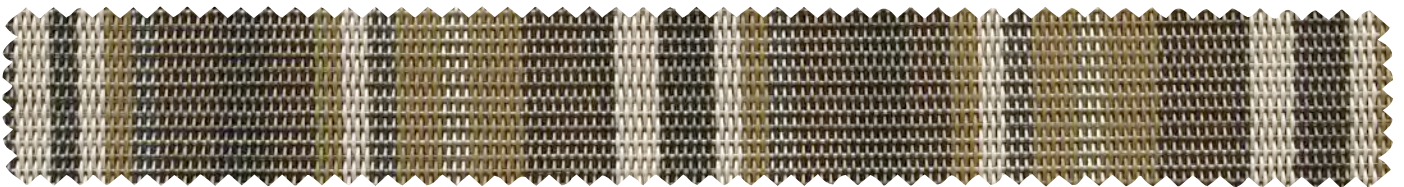
Marlo Stripe Onyx | ZBD | 3038280 | Construction: 42x14



Owen Stripe Surf | LFY | 3036895 | Construction: 42x14



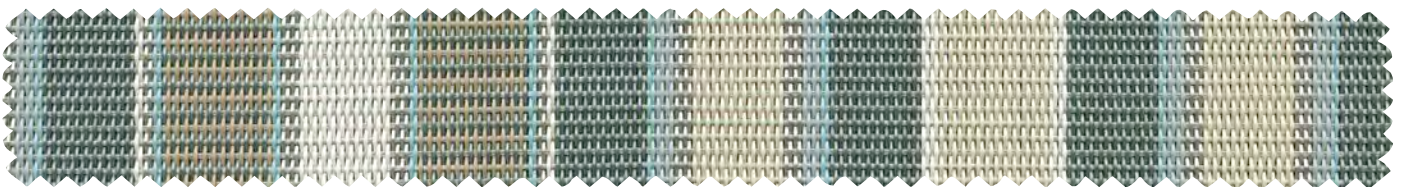
NEW | Tempo Spearmint | DCS | 3039252 | Construction: 42x14



Saylor Stripe Sepia | NN5 | 3034326 | Construction: 42x14



NEW | Maui Royal | LIS | 3039255 | Construction: 42x14

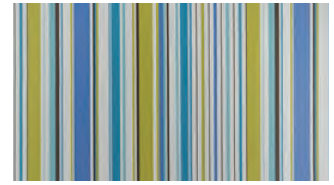


Windsor Stripe Spa | L09 | 3016027 | Construction: 42x14

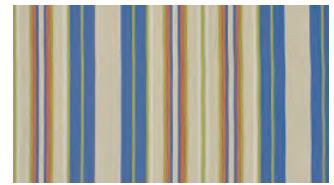




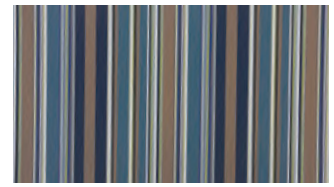
Raleigh Stripe Willow | DAI | 3034327 | Construction: 42x14



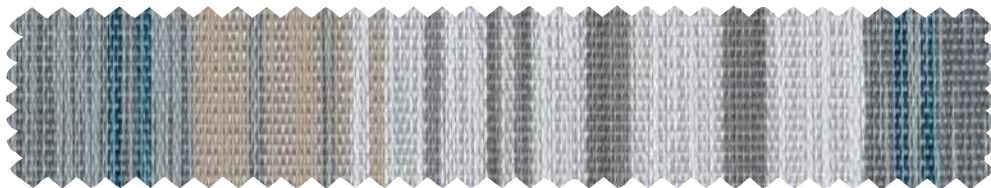
Coastline Peacock | XUM | 3025677 | Construction: 42x14



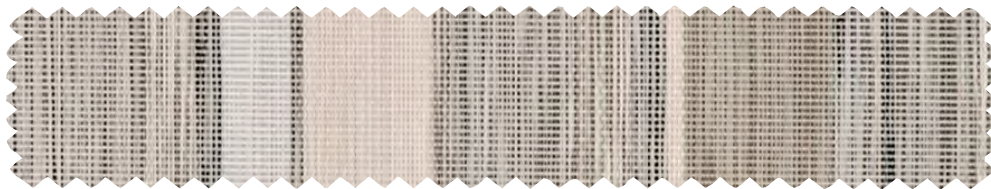
Winsted Stripe Beach | LBX | 3032476 | Construction: 42x14



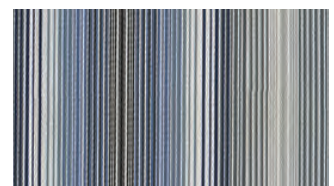
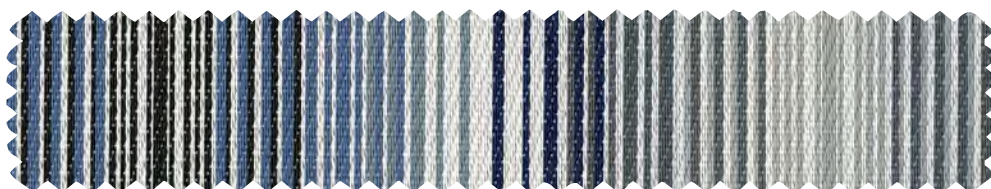
Palazzo Stripe Harbor | LFX | 3036894 | Construction: 42x14



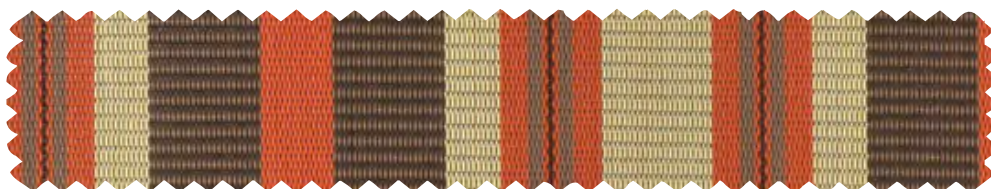
Elise Stripe Chesapeake | LHR | 3038279 | Construction: 42x14



Tempo Stone | YAC | 3029009 | Construction: 42x14



NEW | Daytripper Denim | LIZ | 3039291 | Construction: 42x14



Santiago Stripe | KG3 | 3013960 | Construction: 42x14



## FABRIC FEATURES

### DURABILITY/CLEANABILITY

Functional and durable, Phifertex fabrics offer excellent performance while withstanding spills, splatters and the hustle and bustle of high traffic areas. These fabrics are easy to maintain – easily cleaned with soap and water or 50/50 bleach to water solution.

### WARRANTY

Phifer offers a 3-year limited warranty for Phifertex Outdoor Fabrics. This warranty covers the fabric becoming non-functional due to loss of dimensional stability from exposure to conditions including sunlight, mildew, rot and normal atmospheric conditions. The warranty does not cover damage to the fabric from any source nor does it cover gradual fading or discoloration from atmospheric pollution or other debris. This warranty remains in effect for 3 years from the date of purchase. Phifer will provide new fabric, free of charge, to replace the non-functioning fabric. This warranty does not cover the cost of labor or other consequential or incidental expenses.



### GREENGUARD

GREENGUARD Certification ensures products have met some of the world's most rigorous and comprehensive standards for low emissions of volatile organic compounds (VOCs) into indoor air. Phifer was the first manufacturer in the outdoor fabric industry to achieve GREENGUARD certification. Certification is completely voluntary and ensures that the highest industry standards are being applied to maintain indoor air quality for the health and safety of building occupants.



### MICROBAN®

Phifertex fabrics are the only outdoor furniture fabrics in the world to include Microban protection. Microban antimicrobial protection works continuously to inhibit the growth of bacteria, mold and mildew that can cause stains, odors and product deterioration.



- Microban antimicrobial protection is infused into Phifertex fabrics for lasting protection that won't wash off or wear away for the lifetime of the product.
- Phifertex fabrics infused with Microban antimicrobial technology are ideal for any commercial or residential environment where microbes are a concern, including healthcare, hospitality, home, office, schools and institutions.

### FLAME RETARDANCE

- National Fire Protection Association, NFPA No. 101, "Life Safety Code", Class "A" rating. (Tested in accordance to ASTM E84, Surface Burning Characteristics of Building Material.) 17x11 (ASTM E84-16), 25x25 (ASTM E84-15b), 37x15 (ASTM E84-16), Plus (ASTM E84-15b)
- International Building Code (IBC), Section 803.1.1, Class "A" rating (Tested in accordance to ASTM E84).
- Upholstered Furniture Action Council Fabric Classification Test Method 1990 (UFAC) - Class "I" Rating.
- Federal Motor Vehicles Safety Standards, Section 571.302, Standard Number 302 (FMVSS 302), Flammability of Interior Materials.
- California Technical Bulletin 117-2013, Section 1, Cover Fabric Test.





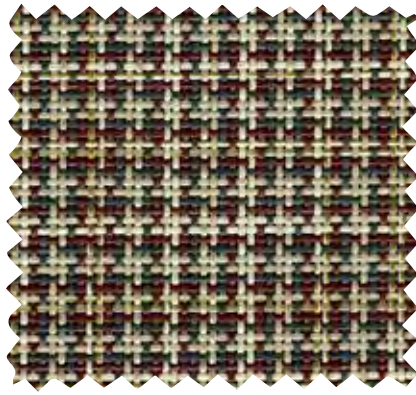
# Phifertex®

BY PHIFER

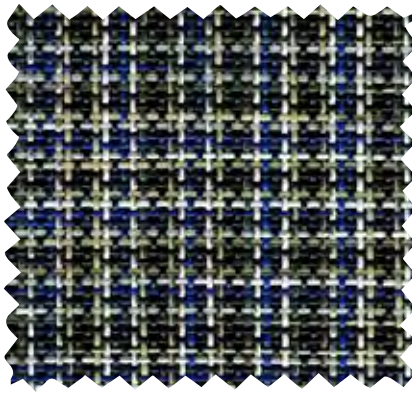
 Wicker Weaves  
Slingable Fabrics



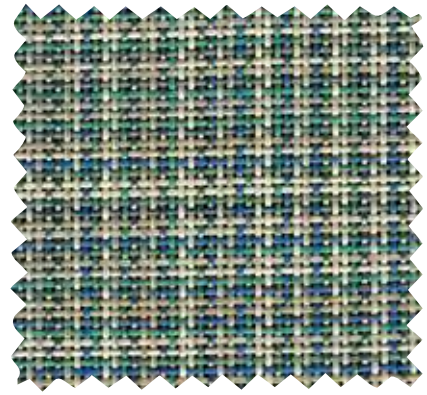




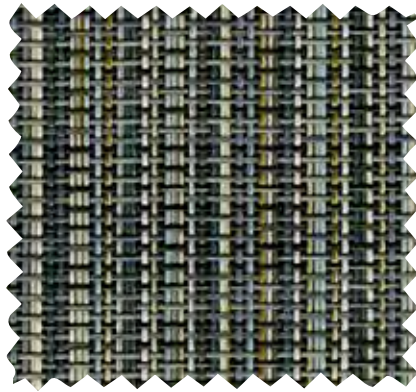
NEW | Tartan Desert | KCC  
3039313 | Construction: 20x20



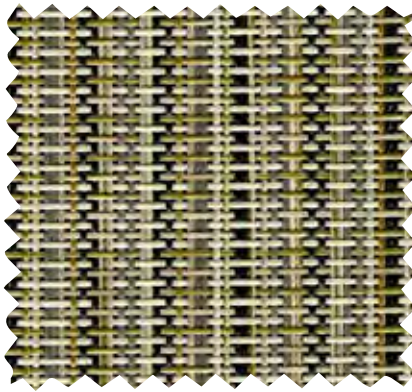
NEW | Tartan Cobalt | LIV  
3039315 | Construction: 20x20



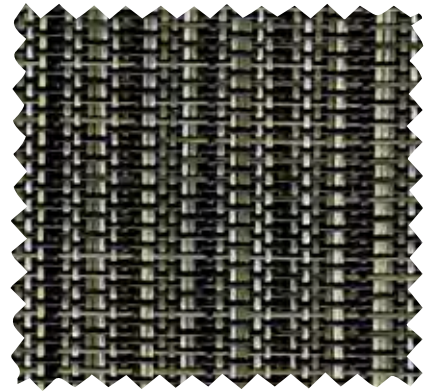
NEW | Tartan Teal | DCV  
3039311 | Construction: 20x20



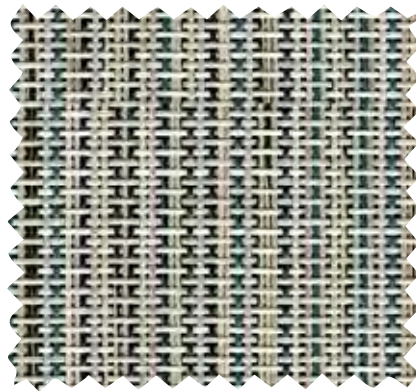
NEW | Sarasa Heron | LIX  
3039317 | Construction: 20x20



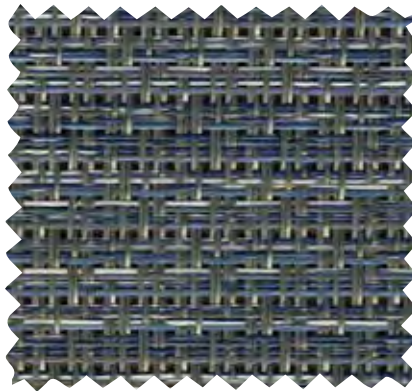
NEW | Sarasa Sands | NBD  
3039319 | Construction: 20x20



NEW | Sarasa Coal | ZBX  
3039321 | Construction: 20x20



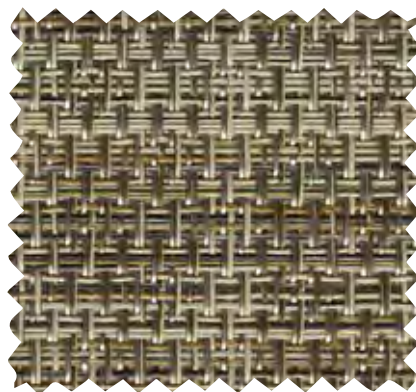
NEW | Sarasa Meadow | DCU  
3039310 | Construction: 20x20



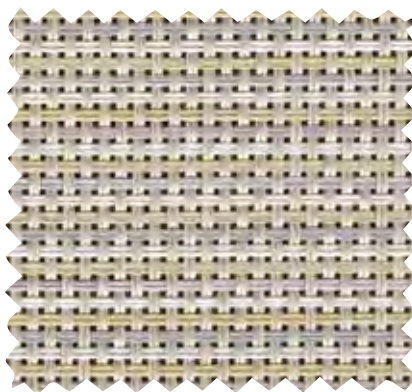
Free Spirit Denim | LHQ  
3038263 | Construction: 22x22



Bevel Wicker Grey | ZBA  
3038265 | Construction: 22x18



Napa Brindle | ET2  
3027662 | Construction: 22x22



Watercolor Tweed Oyster | OGA  
3028985 | Construction: 22x22



Watercolor Tweed Mocha | EX8  
3028986 | Construction: 22x22









NEW | Amalfi Rapids | LIY  
3039318 | Construction: 22x18



NEW | Amalfi Rust | KCD  
3039314 | Construction: 22x18



Charm Platinum | YHK  
3036916 | Construction: 22x18



Charm Blue Haven | LED  
3035583 | Construction: 22x18



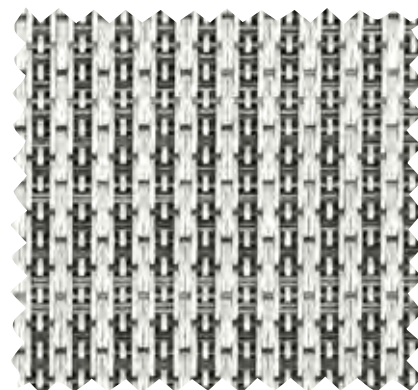
Charm Khaki | DBW  
3036900 | Construction: 22x18



Wicker Cordoba Copper | EH4  
3024081 | Construction: 22x20



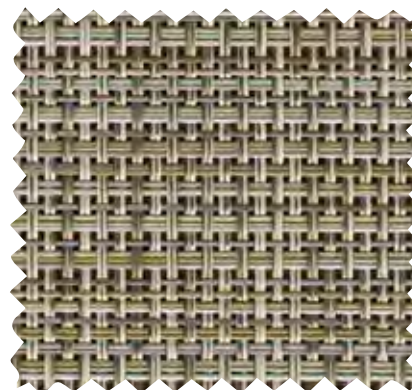
Wicker Cordoba Ninja | XSX  
3024082 | Construction: 22x20



Roma Onyx | 0IT  
3036898 | Construction: 22x20

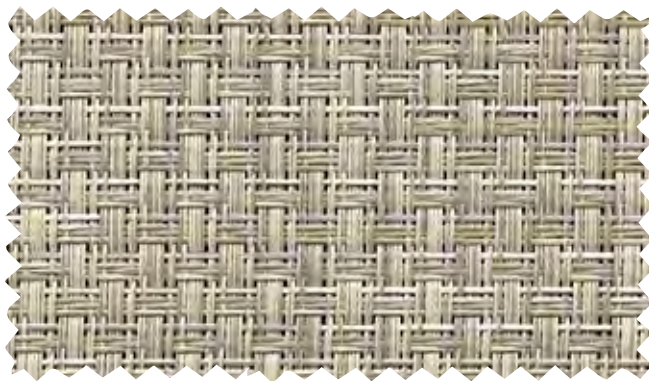


Roma Dove | 0IU  
3036899 | Construction: 22x20

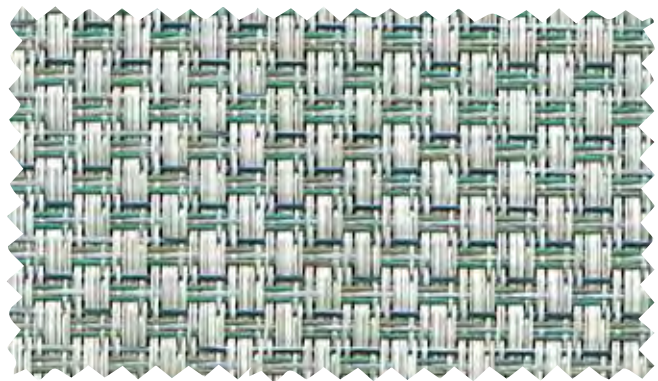


Tiki Glow | NG7  
3032496 | Construction: 22x20





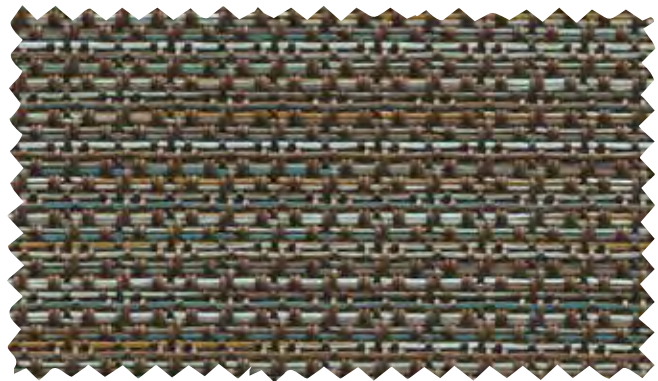
NEW | Interlock Linen | NBE  
3039320 | Construction: 42x20



NEW | Interlock Calypso | DCW  
3039312 | Construction: 42x20



Terrace Sapphire Glow | LFS  
3036914 | Construction: 22x22



Terrace Malachite | LFR  
3036913 | Construction: 22x22



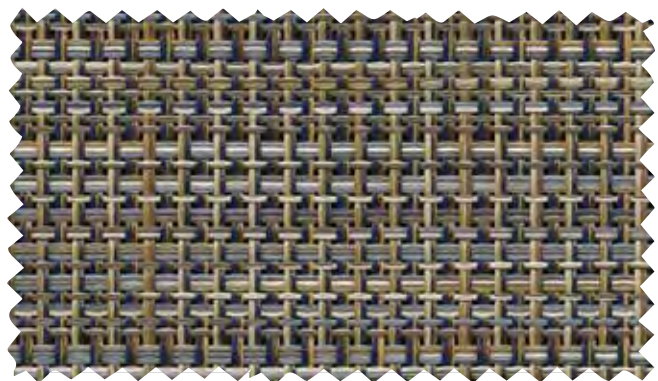
Lanier Wicker Stone | ZBC  
3038266 | Construction: 42x14



Watercolor Tweed Moth | EX7  
3028984 | Construction: 22x22



Terrace Sienna | KP4  
3025671 | Construction: 22x22



Shelby Cadet Blue | LDY  
3035584 | Construction: 22x22



## FABRIC FEATURES

### DURABILITY/CLEANABILITY

Functional and durable, Phifertex fabrics offer excellent performance while withstanding spills, splatters and the hustle and bustle of high traffic areas. These fabrics are easy to maintain – easily cleaned with soap and water or 50/50 bleach to water solution.

### WARRANTY

Phifer offers a 3-year limited warranty for Phifertex Outdoor Fabrics. This warranty covers the fabric becoming non-functional due to loss of dimensional stability from exposure to conditions including sunlight, mildew, rot and normal atmospheric conditions. The warranty does not cover damage to the fabric from any source nor does it cover gradual fading or discoloration from atmospheric pollution or other debris. This warranty remains in effect for 3 years from the date of purchase. Phifer will provide new fabric, free of charge, to replace the non-functioning fabric. This warranty does not cover the cost of labor or other consequential or incidental expenses.



### GREENGUARD

GREENGUARD Certification ensures products have met some of the world's most rigorous and comprehensive standards for low emissions of volatile organic compounds (VOCs) into indoor air. Phifer was the first manufacturer in the outdoor fabric industry to achieve GREENGUARD certification. Certification is completely voluntary and ensures that the highest industry standards are being applied to maintain indoor air quality for the health and safety of building occupants.



### MICROBAN®

Phifertex fabrics are the only outdoor furniture fabrics in the world to include Microban protection. Microban antimicrobial protection works continuously to inhibit the growth of bacteria, mold and mildew that can cause stains, odors and product deterioration.



- Microban antimicrobial protection is infused into Phifertex fabrics for lasting protection that won't wash off or wear away for the lifetime of the product.
- Phifertex fabrics infused with Microban antimicrobial technology are ideal for any commercial or residential environment where microbes are a concern, including healthcare, hospitality, home, office, schools and institutions.

### FLAME RETARDANCE

- National Fire Protection Association, NFPA No. 101, "Life Safety Code", Class "A" rating. (Tested in accordance to ASTM E84, Surface Burning Characteristics of Building Material.) 17x11 (ASTM E84-16), 25x25 (ASTM E84-15b), 37x15 (ASTM E84-16), Plus (ASTM E84-15b)
- International Building Code (IBC), Section 803.1.1, Class "A" rating (Tested in accordance to ASTM E84).
- Upholstered Furniture Action Council Fabric Classification Test Method 1990 (UFAC) - Class "I" Rating.
- Federal Motor Vehicles Safety Standards, Section 571.302, Standard Number 302 (FMVSS 302), Flammability of Interior Materials.
- California Technical Bulletin 117-2013, Section 1, Cover Fabric Test.





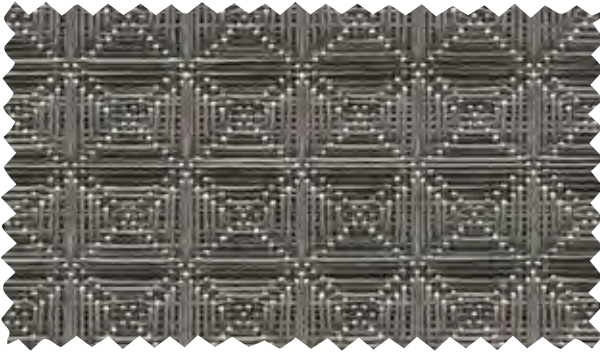
# Phifertex®

BY PHIFER

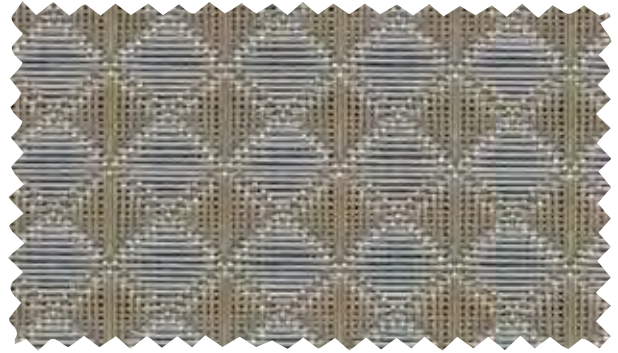
 Wicker Weaves  
Slingable Fabrics



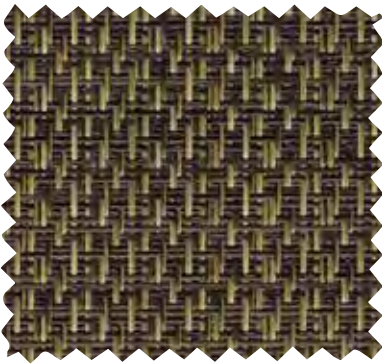




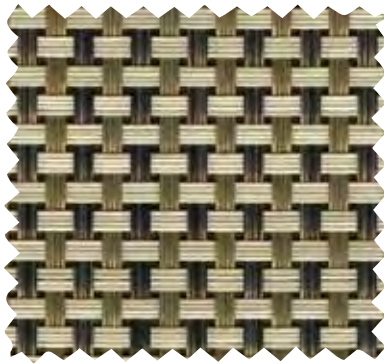
Braque Graphite | YHJ  
 3036915 | Construction: 25x25



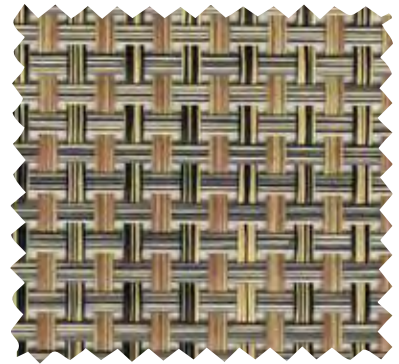
Braque Rain | LFP  
 3036909 | Construction: 25x25



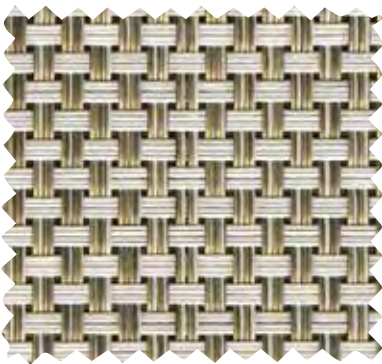
Double Dipper | BT3  
 3018411 | Construction: 25x25



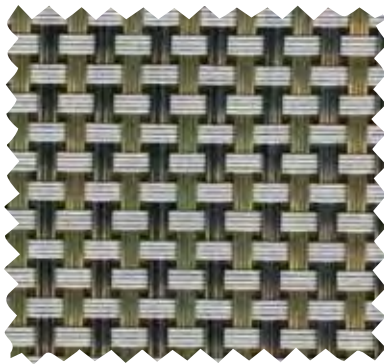
Cane Wicker Balsa | CX3  
 3007333 | Construction: 25x25



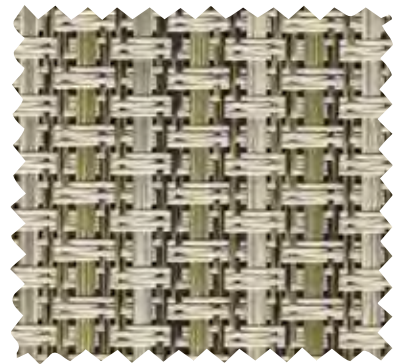
Cane Wicker Desert | AD7  
 3007253 | Construction: 25x25



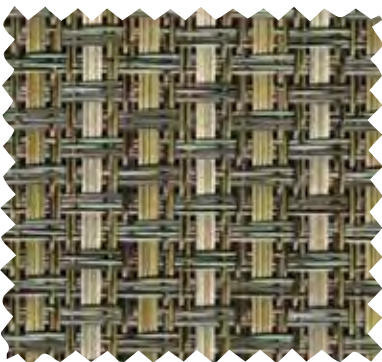
Cane Oyster | 0FE  
 3027664 | Construction: 25X25



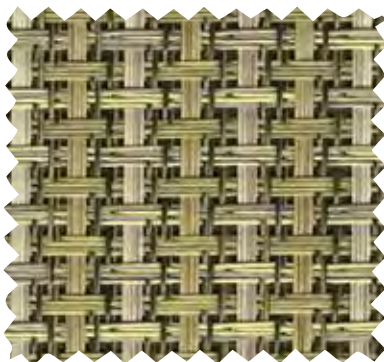
Cane Wicker Aluminum | CX2  
 3007328 | Construction: 25x25



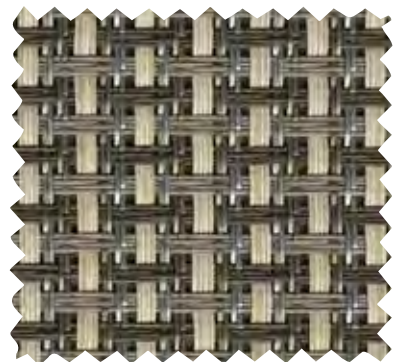
Natural | AB8  
 3013957 | Construction: 25x25



Turquesa | DB1  
 3013955 | Construction: 25x25



Verde | DB2  
 3013956 | Construction: 25x25



Plata | XFG  
 3016021 | Construction: 25x25





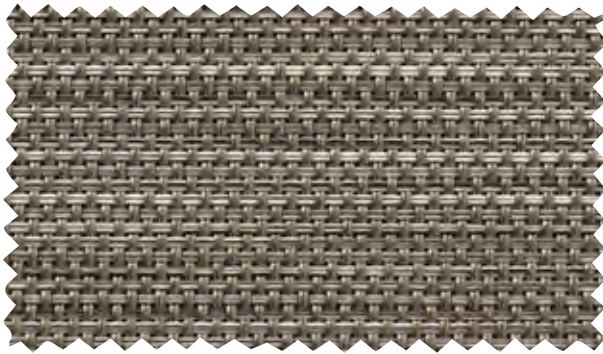




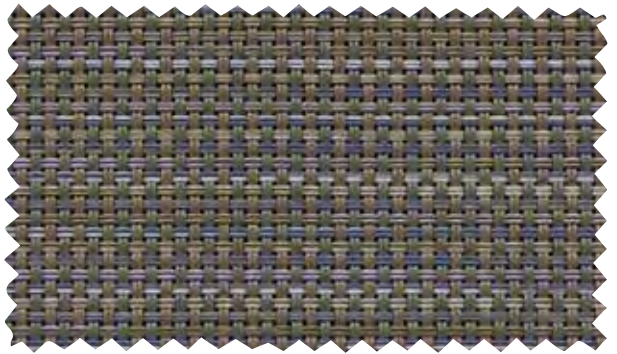
Cane Weave Paprika | KAQ  
 3036901 | Construction: 25x25



Cane Weave Pacific | LFQ  
 3036910 | Construction: 25x25



Watercolor Tweed Pearly | NG8  
 3032497 | Construction: 25x25



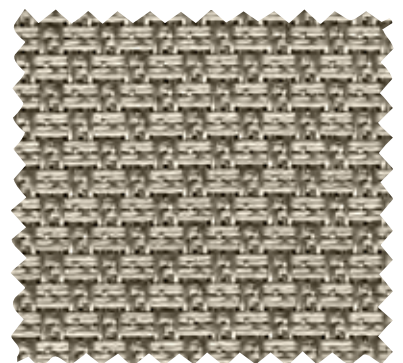
Pria Tweed Indigo | LDD  
 3034305 | Construction: 25x25



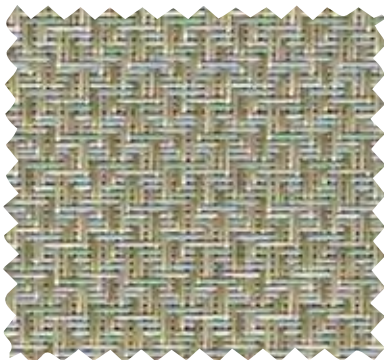
Pria Tweed Sterling | NN6  
 3034303 | Construction: 25x25



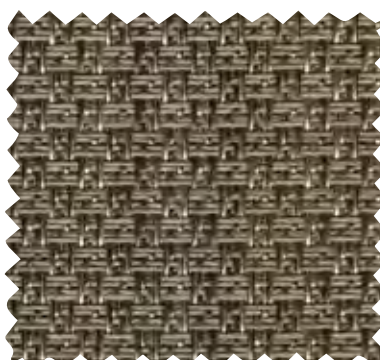
Watercolor Tweed Glow | NG5  
 3032494 | Construction: 25x25



Sisal Aluminum | 00V  
 3009605 | Construction: 25x25



Reflection Seaglass | DW6  
 3030825 | Construction: 25x25

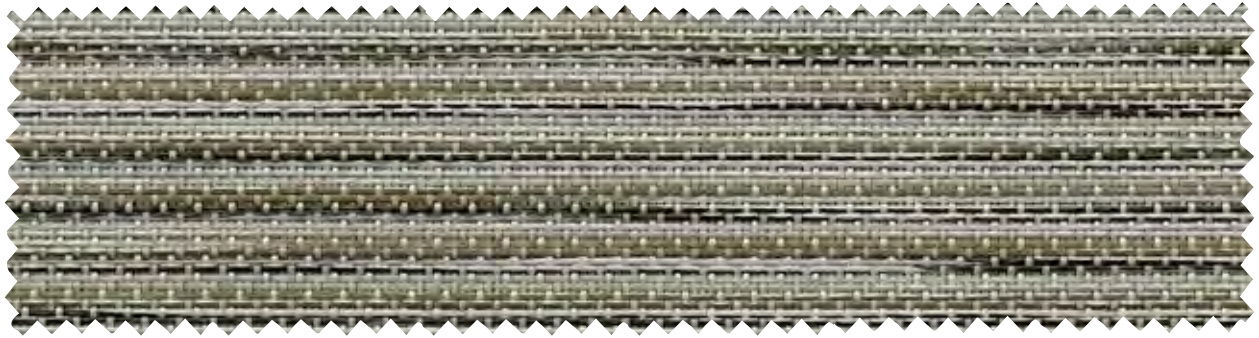


Sisal Tungsten | AK0  
 3007292 | Construction: 25x25



Echo Valley Sadat | EH6  
 3024085 | Construction: 25x25





NEW | Kozo Fossil | ZBY  
 3039322 | Construction: 25x25



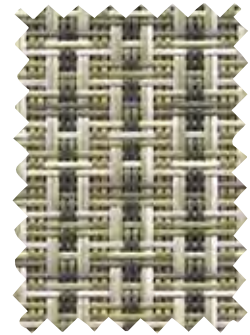
NEW | Kozo Jewel | LIW  
 3039316 | Construction: 25x25



NEW | Kozo Abalone | OJX  
 3039309 | Construction: 25x25



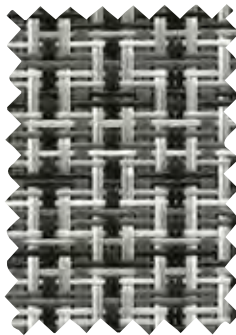
Caribbean Cane | LHT  
 3038264 | Construction: 25x25



Jazzy Glow | 717  
 3038259 | Construction: 25X20



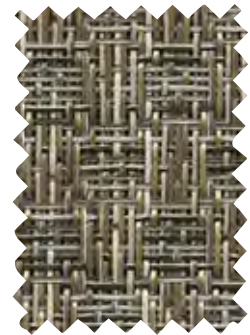
Jazzy Twilight | LHP  
 3038260 | Construction: 25x20



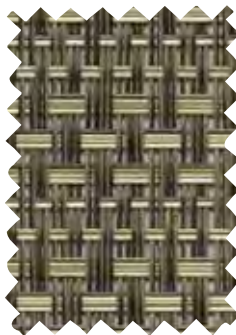
Jazzy Raven | ZAZ  
 3038261 | Construction: 25x20



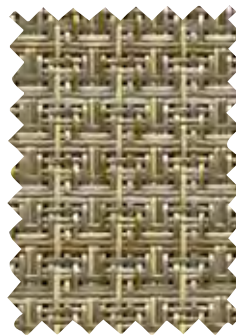
Wicker Veranda Nutmeg | EM9  
 3025672 | Construction: 25x20



Kamali Limestone | XZY  
 3029024 | Construction: 25x20



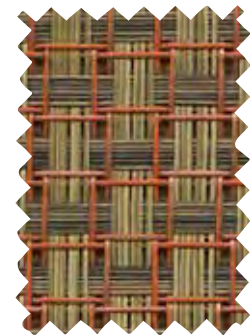
Montego | NG3  
 3032492 | Construction: 25x20



Shelburne Taupe | XZT  
 3028988 | Construction: 25x22



Bellingrath | EH3  
 3024083 | Construction: 25x20



Waffle Wicker Coral Topaz | EC1  
 3021409 | Construction: 25x25





## FABRIC FEATURES

### DURABILITY/CLEANABILITY

Functional and durable, Phifertex fabrics offer excellent performance while withstanding spills, splatters and the hustle and bustle of high traffic areas. These fabrics are easy to maintain – easily cleaned with soap and water or 50/50 bleach to water solution.

### WARRANTY

Phifer offers a 3-year limited warranty for Phifertex Outdoor Fabrics. This warranty covers the fabric becoming non-functional due to loss of dimensional stability from exposure to conditions including sunlight, mildew, rot and normal atmospheric conditions. The warranty does not cover damage to the fabric from any source nor does it cover gradual fading or discoloration from atmospheric pollution or other debris. This warranty remains in effect for 3 years from the date of purchase. Phifer will provide new fabric, free of charge, to replace the non-functioning fabric. This warranty does not cover the cost of labor or other consequential or incidental expenses.



### GREENGUARD

GREENGUARD Certification ensures products have met some of the world's most rigorous and comprehensive standards for low emissions of volatile organic compounds (VOCs) into indoor air. Phifer was the first manufacturer in the outdoor fabric industry to achieve GREENGUARD certification. Certification is completely voluntary and ensures that the highest industry standards are being applied to maintain indoor air quality for the health and safety of building occupants.



### MICROBAN®

Phifertex fabrics are the only outdoor furniture fabrics in the world to include Microban protection. Microban antimicrobial protection works continuously to inhibit the growth of bacteria, mold and mildew that can cause stains, odors and product deterioration.



- Microban antimicrobial protection is infused into Phifertex fabrics for lasting protection that won't wash off or wear away for the lifetime of the product.
- Phifertex fabrics infused with Microban antimicrobial technology are ideal for any commercial or residential environment where microbes are a concern, including healthcare, hospitality, home, office, schools and institutions.

### FLAME RETARDANCE

- National Fire Protection Association, NFPA No. 101, "Life Safety Code", Class "A" rating. (Tested in accordance to ASTM E84, Surface Burning Characteristics of Building Material.) 17x11 (ASTM E84-16), 25x25 (ASTM E84-15b), 37x15 (ASTM E84-16), Plus (ASTM E84-15b)
- International Building Code (IBC), Section 803.1.1, Class "A" rating (Tested in accordance to ASTM E84).
- Upholstered Furniture Action Council Fabric Classification Test Method 1990 (UFAC) - Class "I" Rating.
- Federal Motor Vehicles Safety Standards, Section 571.302, Standard Number 302 (FMVSS 302), Flammability of Interior Materials.
- California Technical Bulletin 117-2013, Section 1, Cover Fabric Test.

